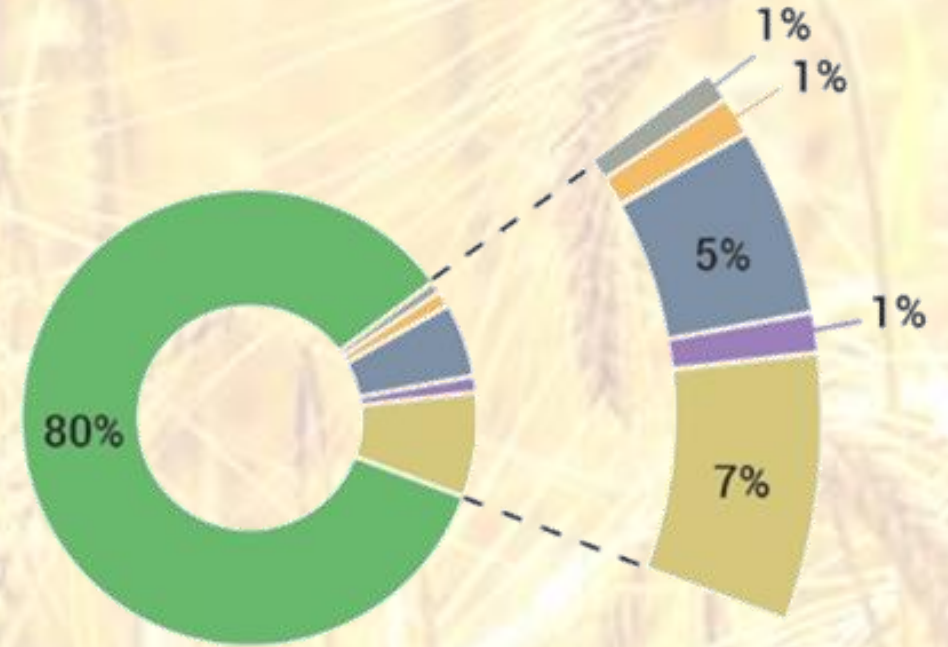


# Natural resource use is driving biodiversity loss

The extraction and processing of materials, fuels, and food are responsible for more than **90% global biodiversity loss.**



Land-use related biodiversity loss



Biomass



Metals



Non-metallic minerals



Fossil fuels



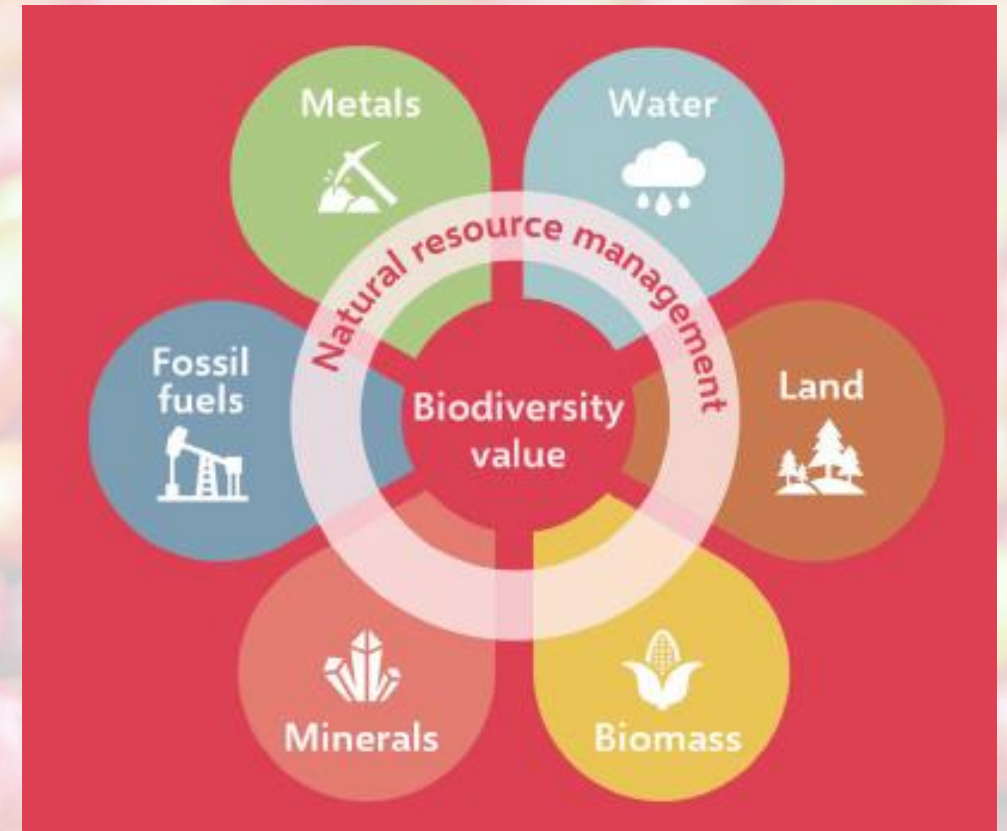
Remaining economy



Households

# We rely on nature, and we are rapidly losing it

- Biodiversity is declining faster than ever, with catastrophic results.
- Unsustainable natural resource use and economic systems are driving the crisis.
- New targets are coming, and they need to embed the natural resource management principles.



# Four natural resource management principles



## KNOW YOUR TRUE IMPACT

The principle of value-chain transparency



## PLAN TOGETHER

The principle of integrated landscape planning



## GROW WITH NATURE

The principle of nature-based solutions



## VALUE NATURE

The principle of recognizing nature's benefits

# We call on Kunming to...

1. Adopt bold biodiversity targets based on natural resource management approaches to address the drivers of biodiversity loss.
2. Embed the principles of natural resource management into implementation mechanisms in the post-2020 framework.
3. Support transboundary partnerships for innovation and investment in regeneration.
4. Strengthen multilateral cooperation for better governance of natural resources.